









# VIAERO: NEW. IMPROVED.

As it turns out, the road to deploying a great network is a *whole lot* like rocket science. It takes a serious amount of engineering and, yes, a bit of trial and error. But now we're running full speed ahead. We thank you if you've stuck with us. If you haven't, we're going to earn your loyalty back. How? With *quality* and with *value*.

**Quality:** it's what you'll find at the new Viaero. You'll find it in our solid, extensive network. You'll find quality in our personal, local customer service. And you'll surely find quality in our phone selection, which includes the new Samsung® Galaxy S4.

**Value** is our ability to provide quality service at affordable prices. A perfect example: our all-new Simplicity Plans, which can save you up to \$1200 over the life of your contract.

Of course, we don't expect you to just take our word for how much better we are. The truth is that *you*, our customer, are the best judge of our worth. That's why we offer you a sincere invitation to come experience the new, improved Viaero Wireless.

Viaero Unlimited Everything Plan vs. Verizon 10 GB Shared Data Plan	VIAERO 4G WIRELESS	Verizon
PRICE FOR 2 SMARTPHONES	<b>\$130/mo.</b>	\$180/mo.
DATA ALLOWANCE	<b>UNLIMITED*</b>	10 GB (shared)
ADDITIONAL DATA COST	<b>\$0</b>	\$15/1 GB
VOICE	UNLIMITED	UNLIMITED
MESSAGING	UNLIMITED	UNLIMITED
<b>SAVE up to \$1200</b> over 24-mo. contract term		

## Samsung Galaxy™ S4

- 5" HD S-AMOLED Display
- Viaero 4G Ready
- 13 MP Main Camera
- Four-Core Processor

**\$200\*\***

plus \$20/month for 24 months



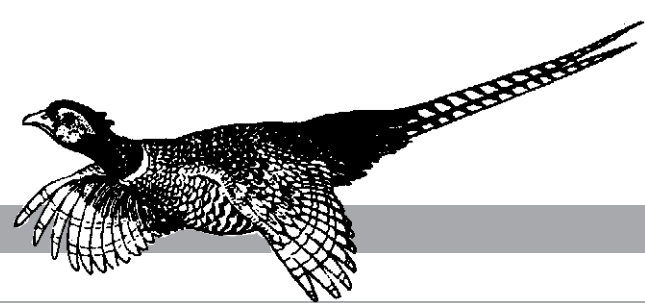
**f** BECOME OUR FAN ON FACEBOOK  
www.facebook.com/viaero

VIAERO.COM | FIND YOUR LOCAL STORE. CHECK COVERAGE AREAS. | 877.484.2376

All screen images simulated. \* Unlimited data use on Viaero's local network; roaming (off-network) data allowance is 200 MB/month. \*\* While supplies last; promotion requires a new/renewed 24-month voice contract and a Viaero smartphone data plan contract per line, maximum of five lines. Galaxy S4 purchase requires initial payment of \$200, then additional installments of \$20 per month for 24 months. Alternatively, customer may purchase the Galaxy S4 for the full price of \$860 at time of initial sale. Other restrictions may apply; see store for details. Savings comparison is based on Verizon Wireless plan information taken from www.verizonwireless.com on 05/01/2013. All brands, product names, company names, trademarks and service marks are the properties of their respective owners. Viaero assumes no obligations or liability and makes no representation, warranty, endorsement or guarantee in relation to any third-party products or services. All rights reserved. © NE Colorado Cellular, Inc. d/b/a/ Viaero Wireless.

# Sports

The Wayne Herald



## From The Bleachers

Michael Carnes



# Area All-Stars shine at Classics

## All-star tilt great show for debut

Now that spring is finally here, and summer is around the corner, it's time to clear out the weeds and other foreign matter in the "Bits and Pieces" file:

- Talk about going in the Way-back machine . . . the first-ever Northeast Nebraska All-Star Football Classic was an opportunity to see some of the area's best graduating high school talent, and they put on a great show Saturday in Norfolk.

For me, the fun part was seeing two old goats match wits on opposing sidelines (and I'd like to take this opportunity to apologize to all the goats in the area reading this week's column).

Legendary high school coach Bob Schnitzler, who was the mastermind of the Battle Creek dynasty for the better part of three decades; and Rich Rethwisch, himself the author of a state championship and state runner-up team and former Wayne High coach, were the head coaches for the debut edition of what will certainly be a fun all-star game to watch in years ahead.

I've had the opportunity to work with both Schnitzler and Rethwisch on the radio in the past couple of years, as both served as my color commentators when I did some state basketball and football on 97.5 FM in Norfolk. You couldn't ask for two more knowledgeable coaches to have as your on-air sidekick, and it seemed only fitting that those two, whose careers as coaches was made here in this part of the state, would lead the way in this first football classic.

This all-star game was something Rethwisch had been working on for some time, and it was good to see the game finally come off and come off as well as it did.

- One thing I thought was a brilliant idea as far as the all-star football game was bringing in a couple of former championship-caliber coaches who are no longer coaching to serve as the head coaches.

Having coaches who have won state titles, as Schnitzler and Rethwisch have done, is a very interesting bridge to gap the great area teams of the past with today's outstanding athletes.

Unless you are graduates of schools like Battle Creek, Norfolk Catholic or any other area school that's won a state title, a lot of the things you hear about these coaches are stories that have been told and retold over the years.

I remember watching Schnitzler's Braves battle my alma mater, Milford, in back-to-back championship games in the 1990s, including the first year for state title games at Memorial Stadium in 1996 (I still believe that, had that game been played on a high school as it had been in previous years, Battle Creek's last-second field goal likely would have been good, giving them a payback title).

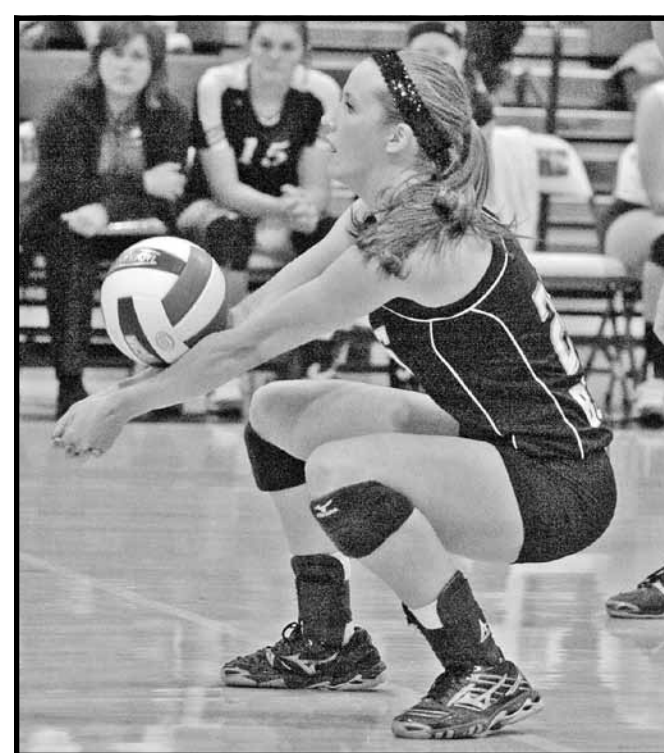
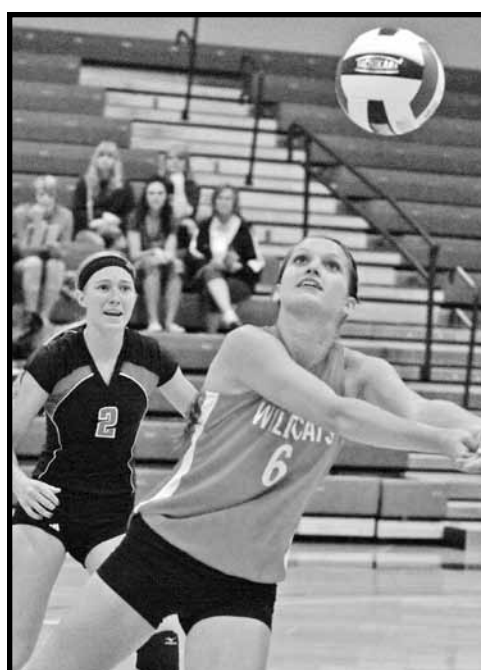
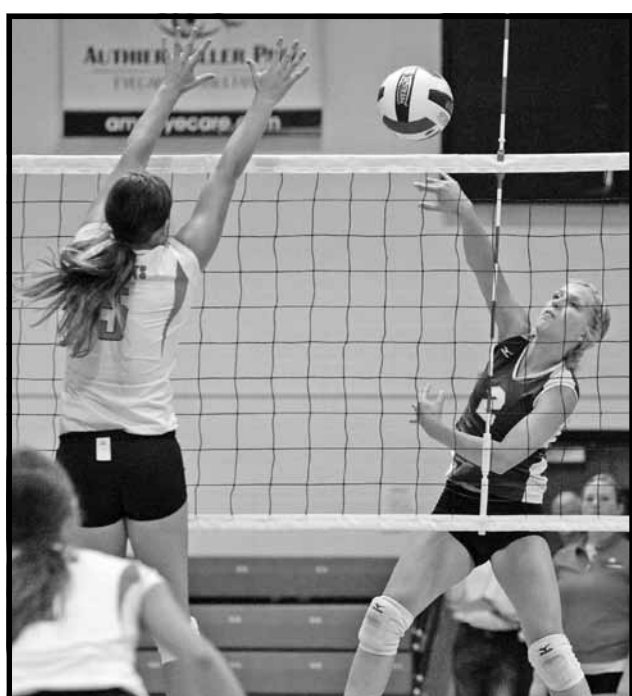
There were many epic battles between Battle Creek and Norfolk Catholic, and there are more rivalry games involving area teams than we can even begin to document here. Many of these coaches who led their area teams to state titles are retired but still around, and it would be fun to see them back on the sideline for one more game.

- One item of confusion from Saturday was with the all-star volleyball game.

The teams were separated into "Dark" and "Light" teams, but players wore their old high school jerseys, some of which were one or the other. Some of the "Dark" players had white jerseys, while some of the "Light" wore their school's dominant color. It was challenging enough telling the players without a program.

Whoever is in charge of the all-star games should pony up the money for T-shirts or uniforms for the two teams, to avoid further confusion.

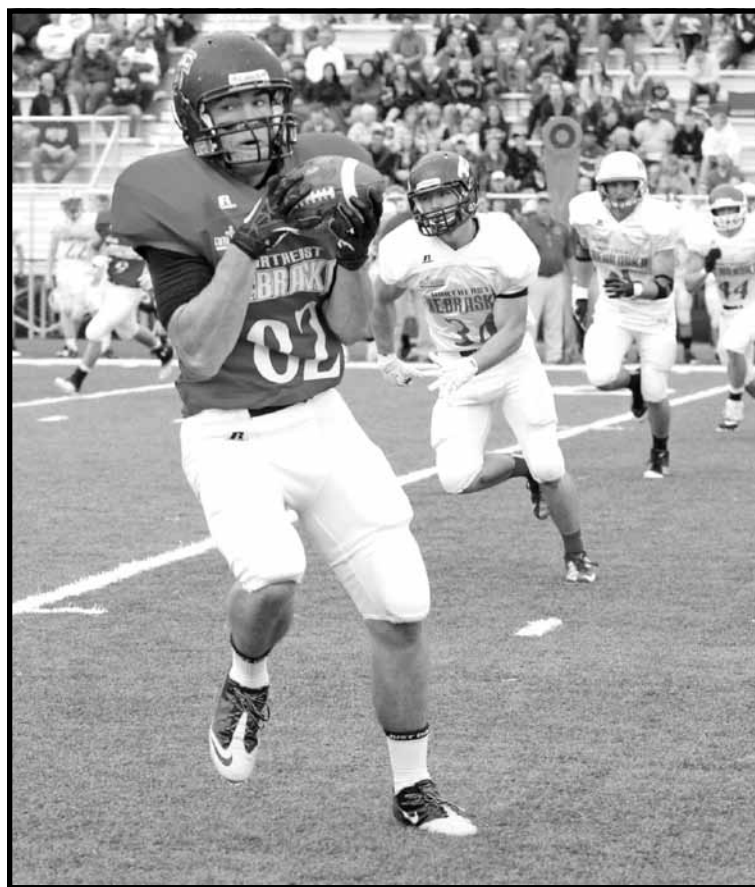
- LSU is back in the College World Series. Should be fun tailgating this weekend.



Photos by Michael Carnes



The area was well-represented on Saturday in Norfolk for the 16th annual Northeast Nebraska All-Star Volleyball Classic and the first-ever all-star football game. Area athletes competing in the volleyball all-star game included (clockwise from above) Brittany Sullivan of Allen, Sydney Rose of Wakefield, Kiley Thompson of LCC and Nazya Thies of Winside. Three LCC seniors played in the football classic, including (clockwise from far right) Kyle Kardell, Austin Roach and Justin Saunders. Former Wayne High coach Wayne Rethwisch (below, talking with Saunders) coached the Red team in the inaugural classic.



## Seniors improve to 7-1 with four victories

The Wayne American Legion Seniors got some great pitching on Thursday and hot hitting to start the week and improve to 7-1 on the season.

On Thursday, Joey Lenihan pitched a fantastic game for six innings but needed a walk-off single by Jordan Backer in the bottom of the seventh to see Wayne edge Hartington, 2-1.

It was a classic pitchers' duel at Hank Overin Field, as both teams had opportunities to score throughout the game, before pitching and defense ended several key rallies.

The game remained scoreless until the sixth, when Wayne took advantage of three Hartington errors to plate a run.

Hartington could not solve Lenihan's pitching, as he threw a masterful game with 15 strikeouts in six innings, allowing just three hits, three walks and a hit batter.

Drew Carroll came on in relief, but the visitors laced a pair of two-out doubles to tie the game in the top of the seventh. Wayne got two runners on in the bottom of the seventh, and Backer came through with a single to left, scoring Carroll

with the winning run. Wayne outhit Hartington 8-5 in the game. Carroll had three hits, while Backer and Danny Melena each had two, and Steven Sherman had a single.

On Monday, the Wayne Seniors blew up with two big innings against Laurel-Concord-Coleridge, scoring seven in the second and eight in the fourth on their way to a 17-1 blowout.

Eight different players had at least one hit in the game, led by Lenihan's two hits, including a double and triple. He scored three runs and drove in three more. Sherman and Grant Anderson each had two RBI's, and Sherman, Backer, Melena and Bradley Longe each scored twice. Longe got the win on the mound, allowing one hit in three innings and striking out five. Anderson threw two innings of hitless relief, striking out three more.

On Tuesday, Wayne swept Norfolk in Seniors action at Veterans Memorial Field in Norfolk, winning 6-4 and 14-1.

Carroll had a huge night at the



Joey Lenihan didn't get the decision in Thursday's win over Hartington, but pitched a masterful effort, striking out 15 in six innings. (Photo by Michael Carnes)

See SENIORS, Page 2B











Students attending the State Science Meet from Wayne Community School included (left) R.J. Liska, Marta Pulfer, Amelia Blankenau, Delaney Jensen and Caden Korth.



Students attending the State Science meet from Allen Consolidated Schools were (left) Amanda Finnegan, Chase Johnson, Rachel Kneifl, Tayler Kumm and Austin Roth.

## Annual state science meet draws 54 students from across Nebraska

Fifty-nine eighth-grade students from 24 schools across Nebraska attended UNMC's 21st annual State Science Meet June 6-8, for an educational and fun experience.

Area students taking part included:

**Allen Consolidated Schools** — Amanda Finnegan (Newcastle), Chase Johnson, Rachel Kneifl, Tayler Kumm and Austin Roth.

**Wayne Community School** — R.J. Liska, Marta Pulfer, Amelia Blankenau, Delaney Jensen and Caden Korth

The goal of the meet is to inspire students, especially those from rural communities, to pursue careers in health care. The students qualify for the meet by submitting science projects in one of seven regional science meets sponsored by the Ne-

braska Area Health Education Centers across the state earlier in the year.

While on campus, students were exposed to the health professions, medical research and patient care. Events included hands-on science activities, such as presentations about a variety of health science disciplines, tours of UNMC and a team science competition.

## Wayne State College announces Dean's List for academic achievement

More than 800 students at Wayne State College were named to the Dean's List for exemplary academic achievement during the past semester.

Students listed on the dean's list are full-time undergraduate students who have achieved a GPA of

3.5 or above on a 4.0 scale for the semester. An \* denotes a 4.0 GPA for the term.

Local students receiving honors included:

Keith Jorgensen\*, Melissa Norris, Cally Tschirren and Scott Wilmes, all of Allen;

D.J. Dunklau\*, Erin Hausmann, Levi Kenny, Anna Osten\* and Audrey Roberts, all of Carroll;

Ross Statler of Hoskins;

Jade Cunningham\*, Austin Dvorak, Emma Engebretsen\*, Mallorie Granquist, Brent Heikes, Audrey Kastrup, Kyle Koester and Lauren Ryan, all of Laurel;

Dee Foote, Cassady Miller\*, AnnaLeigh Miner and Tessa Moser, all of Wakefield;

Charlette Bowens Kissi Afare, Benjamin Bruflat, Elizabeth Brummond, Jessica Buck, Taylor Burke, Vanessa Christensen\*, Lindsey Costa, Douglas Cudaback, Kimber-

## Recent heavy rains demonstrate value of conservation practices

Part of the state saw significant rainfall last week, with some areas receiving over nine inches in just a few hours. Although the moisture was welcomed in most areas, some areas experienced damages like flooding and soil erosion.

According to State Conservationist Craig Derickson with the USDA's Natural Resources Conservation Service (NRCS), erosion problems have been high in fields that have recently been broken out for cropland production or fields that lack structural conservation practices like terraces and waterways.

"High prices driven by a strong demand for our commodities are boosting farm income but are putting enormous pressure on our land and water resources. We're seeing more land broken out to farm and fewer conservation practices like terraces and waterways, which can result in more soil erosion," Derickson said.

This became apparent following last week's heavy rainfall. On some farms, when heavy rains came, conservation practices were not in place to help prevent soil from washing away.

"Our staff is seeing erosion issues on cropland across the state. In draws where trees were recently removed and then planted through, the newly planted crop has been washed away, and there are deep gullies," Derickson said. "This is creating concern among NRCS staff as we conduct field visits to do conservation compliance checks."

As part of the 1985 Farm Bill, conservation compliance was enacted. This created a partnership between farmers and ranchers and the USDA. In exchange for farm program benefits, farmers agreed to adopt land management practices to reduce soil erosion, conserve water, create wildlife habitat and protect wetlands. According to the USDA, this resulted in soil erosion being cut by 40 percent on 140 million acres of cropland.

The USDA Farm Service Agency (FSA) partners with NRCS in the conservation compliance process.

"Farmers and landowners certify their compliance by completing a Highly Erodible Land and Wetland Conservation Certification" FSA state director Dan Steinkruger explained. "We ask farmers to work with the NRCS to evaluate the conservation planning and assistance needed on their farms."

For landowners to remain in compliance with USDA, a conservation plan is required on highly erodible land. NRCS works with landowners to develop conservation plans, and Farm Bill programs provide incentive payments to assist with the installation and maintenance of conservation practices.

"The key to a successful conservation plan is for farmers and ranchers to work closely with USDA. If a producer wants to break out new land, alter a wetland or remove any conservation practices like terraces and waterways, they need to first visit their local USDA Service Center. USDA employees can work with landowners to ensure any land changes don't put the producer at risk of being out of compliance with their conservation plan," Derickson said.

NRCS works with landowners to develop a conservation plan to apply conservation practices on their property. Conservation practices work to lessen the negative impact of the extreme dry conditions Nebraska experienced last year, as well as the recent heavy rainfall events.

"Nebraska is a place of extremes

that can quickly move from drought to flooding. Conservation practices can help farmers and ranchers endure these extremes. Conservation practices work, but they only work if installed and maintained properly.

"America's farmers produce more than food and fiber — they also produce clean water and air, open spaces and habitat for wildlife. A conservation plan helps landowners achieve these goals that benefit all Nebraskans," Derickson said.

Producers are reminded to work with USDA to install and maintain conservation practices.

For more information on conservation compliance and installing conservation practices on your land, contact your local Natural Resources Conservation Service office. Information is also available online at [www.ne.nrcs.usda.gov](http://www.ne.nrcs.usda.gov).

**LAWN MOWING**  
Call Dylan  
402-369-3560  
Will Also Do  
Odd Jobs

**CORY BROWN CONSTRUCTION**  
For all of your construction needs!  
Remodeling projects  
Custom homes  
Windows • Doors • Siding  
Lite form  
402-278-2518  
Wakefield, NE

**TOP HAT IS CLOSING**  
No new projects after July 15  
Projects need to be picked up by July 30 or ownership will revert to us  
Chimney service will continue under  
**Lyon Chimney Cleaning**  
Call 402-371-7515

**Great Mortgage Rates won't last forever!**  
Act now to take advantage of incredibly low rates on home mortgages. Our experienced loan officers are here to answer your questions and help you secure the sensible home mortgage you need to open the door.

**FMB & Bank**  
321 MAIN STREET  
WAYNE, NE 68787  
402-375-2043  
Member FDIC  
[www.fmbankne.com](http://www.fmbankne.com)

**CAR CARE**

**Fredrickson Oil Co.**  
New services available at our CONVENIENCE STORE  
STATION SERVICES INCLUDE:  
Self Service • Full Service • Competitive Pricing • Tune-ups  
4 full & 4 self service products • Brake Service  
Exhaust Service Lubrication • Alignments  
Computer Balancing • Air Conditioning Service  
1 3/4 Miles N. on 15 Wayne, NE  
Phone 375-3535 or toll free 1-800-672-3313

**WAYNE AUTO PARTS INC.**  
COMPLETE MACHINE SHOP SERVICE  
TRUCK & TRACTOR PARTS  
43 YEARS  
117 SOUTH MAIN WAYNE 375-3424  
Monday-Friday 7am - 5:30 pm Saturday 7am - 4 pm

**TOM'S Body & Paint Shop, Inc.**  
108 Pearl Street  
Wayne, NE 68787  
Phone (402) 375-4555

Member of Nebraska Auto Body Association

**GOODYEAR**  
ON-FARM FUEL DELIVERY  
SPECIAL PRICES ON SPRING OIL DELIVERIES  
WE HAVE A MECHANIC ON DUTY

**ZACH OIL CO.**  
(402) 375-2121 • 310 South Main • Wayne, NE

**Relax on Your Custom Deck!**

- Steel Roofing
- Asphalt Roofing
- Windows
- Siding
- Custom Decks
- Vinyl Fencing
- Seamless Gutters
- Lased Concrete
- Pole Buildings
- Custom Home Building

FREE ESTIMATES • LOCALLY OWNED

**ABG CONTRACTING**  
SERVING NORTHEAST NEBRASKA  
EPA Certified/Lead Base Paint Renovator

[www.AbgContractingNE.com](http://www.AbgContractingNE.com) (402) 649-8377

See below for additional great offers

**S'more the Merrier**

**DQ Grill & Chill**  
708 MAIN ST  
WAYNE, NE 68787  
402.375.1404

**\$1 OFF**  
any S'Mores product  
(excluding mini-size Blizzard)

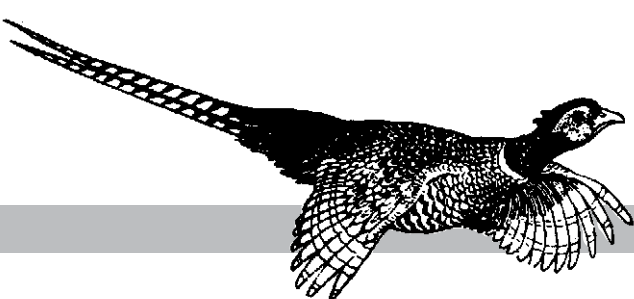
**\$1 OFF**  
any Orange Julius product

Limit one coupon per customer, per visit. Not valid with other offers, promotions, or discounts. Void if altered, copied, sold, exchanged or where restricted by law. No cash value. Plus tax if applicable. All trademarks owned or licensed by Am. D.Q. Corp. ©2010, ®, TM, and © 2010 D.Q. of Am. Valid at: DQ GRILL & CHILL 708 MAIN ST WAYNE, NE 68787 402.375.1404 Expires: 7/31/2013



Hundreds of cancer survivors, caregivers, family members and friends took part in the annual Wayne County Relay For Life. From the Survivor Lap, above to food provided by a number of area businesses and individuals, to fun and games, the event helps bring people together to celebrate those who have survived bouts with cancer, remember those who have lost the fight and fight back so some day no one will have to hear the words "you have cancer." Funds raised by Relays throughout the country are used for education, services and research by the American Cancer Society. Hundreds of luminaria bags lined the track, listing the names of those who have been affected by the disease. Ten teams were part of this year's event, raising nearly \$50,000.





The Wayne  
Herald

# Opinion

## Don't get me started

By: Michael Carnes  
Managing Editor

## A new member joining the family

I have some big news to report this Father's Day week – I'm going to be a dad.

While this might come as shocking news to those who know me and know my past history with the fairer sex, this actually has nothing to do with procreation and adding to the general population.

Truth be told – I'm adopting a dog.

I have often joked about those moments in the life of my daughter, Kylie, when she would do something that was completely out of character and a source of frustration, I would always say to myself, "I could have adopted a puppy."

Well – now I've gone and done it. (Although, I would like to add, it has nothing to do with anything my daughter has done. In fact, she recently was named catering manager at an Omaha-area Hy-Vee store, which I'm very proud to announce. Anyway, back to the dog . . .)

Harley is an older beagle that I met when we started our Pet of the Week online video program on mywaynews.com. He's a friendly, happy-go-lucky dog with a face that I just couldn't walk away from.

That I've come to a point in my life where I felt comfortable having an animal in the house is something that has been a long time coming. In fact, it's been more than 20 years since I last had a dog in the family, and I had sworn at that time to never have another animal in my house.

I've had two dogs in my life, Buffy and Precious. Buffy was a Christmas present from my mom and dad when I was an infant. Precious was my 4-H project and could always put a smile on my face after a tough day at school or the office.

One time, my mom was in the other room folding laundry when she heard a scream and, almost immediately after, a yelp. She came into the living room to find a crying boy and Buffy behind the rocking chair with a wet mark on its forehead.

"What happened?" my mother asked.

"Buffy bit me, so I bit her back," her 3-year-old son exclaimed between angry tears.

Another time, my mother heard me giggling in the kitchen and walked in to find the two of us sitting on the floor, a big bag of Purina Dog Chow in between us, with the following play-by-play being announced:

"One for you (Buffy), and one for me," I said, giving the dog a piece of food from the bag and then following with a tasty tidbit for myself (and, for the record, Purina Dog Chow isn't all that bad).

Precious came into our lives when I was a teenager. Buffy was getting up in years but was still around and made it clear to the new pup that this was HER house. She eventually came to terms that this young black miniature Schnauzer was going to be around and came to accept the new dog.

When Buffy died at the age of 14 (98 in dog years), I was devastated. The only dog I had even known my whole life was gone, but Precious was there to soften the blow, and she became my new best friend.

When I went away to college, Precious would walk all over the house, looking for me. She knew when I was coming home for the weekend, and my family said they could tell when I was getting close. Precious would look out the window, and her stub of a tail would start to wag when she saw my car come around the corner. The tail would wag slowly, pick up speed as I pulled in the driveway, and she would be jumping and barking and spinning around as I made my way into the house.

In her later years, I took the dog when my parents could no longer take care of her, and she was our extra security guard when Kylie was born. She fell ill shortly after we had moved to a new town, and I made the tough decision of having her put down at the age of 13.

I took her to the vet that day and tried to console her as the vet injected the drug that would end her life. She whined and slowly died in my arms that day, and it was such a devastating moment that I remembered for a long, long time. Having one of my closest friends put to sleep was something that, looking back, I wish I hadn't bothered to be around for.

For many years, family members suggested that I get a dog to have around the house. I could easily rebuke the suggestions with any number of reasons why I was not going to have ANY animal in the house, but in the back of my mind it always came back to my two best friends, both of whom had died and left me heartbroken.

At some point, though, you've got to allow yourself to love and be loved, and Harley's face just hit me in the right place at the right time. He's an older dog, so I know my time with him won't be near as long as it was with Buffy and Precious, but it's an opportunity to have another physical being around to take on a walk, go for a drive and just unload the day's frustrations on without worrying about having things psychoanalyzed to death (ladies, take notes . . .). We've been on a few short walks already, and it feels like a good fit for puppy and poppa.

I'll try to remember to share a photo next week. Until then – Happy Father's Day to all the dads out there.

## Capitol View

# 103rd Legislature adjourns

By J.L. SCHMIDT  
Statehouse Correspondent  
The Nebraska Press Association

The Legislature has adjourned, but the work has just begun.

This was the "long session," the 90-day first session that traditionally includes passage of a new two-year state budget. Done.

Ernie Chambers failed in his 38th try to ban the death penalty. The measure never got past first-round debate (a bill needs three rounds before a final vote) and was tripped up by a legislature filibuster. Surprisingly, Chambers, the master of that legislative tactic, wasn't the one doing all the talking. The bill (LB543) remains alive and could be considered in next year's "short" 60-day second session.

Governor Dave Heineman failed in his attempts to drastically change the state's tax system with two bills, but he succeeded in getting lawmakers to agree to study the situation – a tall order but a necessary one to update the decades-old studies that have become the benchmark.

Chambers succeeded in convincing his colleagues to pass a resolution (LR155) to establish the Tax Modernization Committee to review and recommend updates. The resolution creates the committee from members of the Legislature's Revenue Committee and the chairs of Appropriations, Health and Human Services, Education, Agriculture, Planning and two senators selected by the Legislature's Executive Board. The veteran lawmaker emphasized that the committee will produce a preliminary report to the Legislature and the governor by December 15, 2013, and a final report by November 15, 2014. The committee will meet at least once annually to review and evaluate the tax code.

The Legislature also approved a resolution (LR22) to study how to



www.paulfellcartoons.com

control costs and improve quality in Nebraska's healthcare system. The Health and Human Services Committee will cooperate with the Banking, Commerce and Insurance Committee to convene policymakers and stakeholders to review healthcare coverage, cost and delivery. The committees will be briefed before November 1 and may conduct public hearings to gather input.

The resolution's sponsor, Senator Kathy Campbell of Lincoln, said passage of federal healthcare reform has provided the state an opportunity to discuss what Nebraska's healthcare priorities should be and how to achieve them. Campbell

chairs the Health and Human Services Committee.

Banking Committee Chairman, Senator Mike Gloor of Grand Island, said the study is necessary because 25 percent of the state budget is spent on healthcare issues and the amount is growing.

In addition to taxes and healthcare, lawmakers will also be studying water issues. Natural Resources Committee Chairman, Senator Tom Carlson of Holdrege, sponsored a bill (LB157) to create a task force to look at the sustainability of the state's water resources and recommend changes in water management and policy.

The Water Funding Task Force will include members of the Nebraska Natural Resources Commission, the director of the state Department of Natural Resources, the chair of the Natural Resources Committee and 10 additional members appointed by the governor. A report is due to the Legislature by December 31.

Water issues are complicated because water flows through Nebraska and other states, upstream and down, have federally monitored demands on the flow.

There is a lot of work ahead for lawmakers before they convene next January.

## Legislative Update

# Lot of work is done, and yet to be done

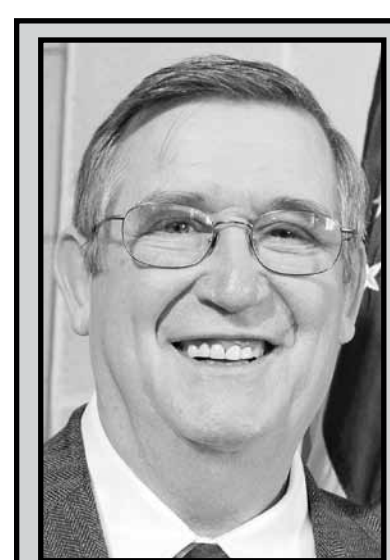
The first session of the 103rd Legislature has come to a close.

In January, 661 bills were introduced. As of adjournment, 214 bills had been signed into law by the Governor. Of the 104 bills that were designated as priority bills, 71 were signed into law.

When we reconvene next January, we will start with 75 bills still on General File ready for debate, and 321 bills are still being held in committee, which includes five of the bills that I introduced. Some of these will be worked on during the interim and advanced from committee

early next session, and others will simply stay in committee until they die upon adjournment next year.

The only thing that we, the Legislature, had to accomplish this year was the budget. After some 30 hours of debate, we passed the two-year \$7.8 billion BALANCED budget. While it is not a perfect budget, it will get the job done, and, more than likely, we will make a few adjustments to it in January. One adjustment that I feel has to be made is restoring funding to the State Auditor's budget, which was cut by the



## Legislative Update

By Dave Bloomfield  
State Senator, District 17

Governor.

There are three tough issues that will still be on the table when we return next year. The first of those being LB543, which would abolish the death penalty. There is no doubt that Senator Chambers of Omaha will bring this bill back. LB577, the Medicaid expansion bill, will become a study during the interim by LR241. By January, we should have a better idea of how the implemen-

tation of Patient Protection and Affordable Care will impact the state financially.

Early on in the session, the Governor had LB405 and LB406 pulled from debate. These were the bills that were introduced to address various tax codes. LR155 establishes the Tax Modernization Committee, which will study ways to reform our current tax codes – sales tax, property tax and income tax.

LR182, which will be studied by the Education Committee, will look at how state aid to schools is divided up among the schools in the state. This was one of the many difficult issues that were debated this year, and I know there are many school districts that were not thrilled with the process this year. As I have said before, the formula used to calculate state aid is a very complicated one, and I think everyone agrees that it needs to be revamped.

In total, I think, we as a legislature spent more of your money than we should have. We were, however, able to block a lot of really unnecessary and even foolish spending that did not occur.

As always, if we can be of any assistance, contact our office at (402) 471-2716 or e-mail dbloomfield@leg.ne.gov.



## Got News?

402-375-2600

800-672-3418

Fax:

402-375-1888

Advertising: whclass@inebraska.com or melissa@wayneherald.com

The views expressed on this page are not necessarily that of this newspaper



News  
Clara Osten  
clara@wayneherald.com



Man. Ed./Sports  
Michael Carnes  
sports@wayneherald.com



Publisher  
Kevin Peterson  
kevin@wayneherald.com

Contact me with concerns from classified ads to editorial

## Wayne City Council Members

<b>First Ward</b> Nick Muir — 369-0795 Rod Greve — 375-1486	<b>Third Ward</b> Cale Giese — 369-2145 Kaki Ley — 375-2017
<b>Second Ward</b> Jennifer Sievers — 833-1234 Dale Alexander — 375-4207	<b>Fourth Ward</b> Jon Haase — 375-3811 Jill Brodersen — 833-5504

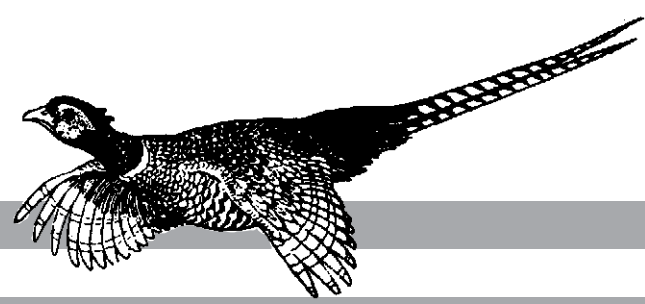
Mayor  
Ken Chamberlain  
375-1699

The Wayne City Council meets the first and third Tuesdays of the month. Meeting times are at 5:30 p.m. at the City Council chambers, located in the Wayne City Offices at 306 N. Pearl St.



# Lifestyle

The Wayne Herald



## How to get healthy and stay healthy Anniversaries

Balance Calories – enjoy your food, but eat less. The total number of calories consumed is what is important to body weight. Although total calorie intake

is ultimately what affects calorie balance, some foods and beverages can be easily over consumed, which results in a higher total calorie intake.

The best advice is to monitor what you eat and replace foods higher in calories with nutrient-dense foods and beverages that are lower in calories.

Decrease your intake of added fats and sugars and increase your intake of lower calorie, nutrient dense whole grains, vegetables, and fruits.

Moderate evidence shows that adults who eat more whole grains, particularly those higher in dietary fiber, have a lower body weight compared to adults who eat fewer whole grains.

Moderate evidence in adults and limited evidence in children and adolescents suggests increased intake of vegetables and/or fruits may protect against weight gain.



Ruth Vonderohe Extension Educator

Avoid oversized portions - People eat and drink more when they are given larger portions. Downsize your portion size. Eat off smaller plates and/or serve smaller portions at home.

When eating out: - Order a small-sized option when possible; - Share a meal, or take home part of the meal;

- Consider asking for the to-go box right away and put half the meal away so you can't see it.

- Review the calorie content of foods and beverages offered and choose lower-calorie options. Calorie information may be available on menus, in a pamphlet, on food wrappers, or online.

**Foods to Increase** Make half your plate fruits and vegetables.

Eat a variety of vegetables, especially dark-green and red and orange vegetables and cooked dry beans and peas.

As a general guideline, your plate should contain half fruits and vegetables. Divide the other half between a protein and a grain source. Make half your grains whole grains.

Switch to fat-free or low-fat (1 percent) milk - increase your intake of fat-free or low-fat milk and milk products, such as milk, yogurt, cheese, or fortified soy beverages. If you are drinking whole milk, gradually switch to lower fat options. If you are drinking whole milk, go to 2

percent and move on down to 1 percent low-fat or fat-free milk.

Lower fat milk provides the same nutrients as higher fat milk, but is lower in calories.

### Foods to Reduce

Compare sodium in foods like soup, bread, and frozen meals - and choose the foods with lower numbers.

A strong body of evidence supports that as sodium intake for adults decreases, so does blood pressure. There is moderate evidence the same is true for children.

The key recommendations for sodium are as follows:

- Reduce daily sodium intake to less than 2,300 mg.

- Further reduce intake to 1,500 mg among persons who are 51 and older and those of any age who are African American or have hypertension, diabetes, or chronic kidney disease.

The 1,500 mg recommendation applies to about half of the U.S. population, including children, and the majority of adults.

Check the nutrition facts label on foods for sodium content.

- Drink water instead of sugary drinks - added sugars contribute an average of 16 percent of the total calories in American diets. As a percent of calories from total added sugars, a major source of added sugars in the diets of Americans is soda, energy drinks, and sports drinks (36 percent of added sugar intake).

Strong evidence shows children and adolescents who consume more sugar-sweetened beverages have higher body weight compared to those who drink less, and moderate evidence also supports this relationship in adults.

Sugar-sweetened beverages provide excess calories and few essential nutrients to the diet and should only be consumed when nutrient needs have been met and without exceeding daily calorie limits.

Reduce the intake of sugary drinks by:

- Drinking fewer sugar-sweetened beverages;

- Consuming smaller portions;

- Substituting water and other beverages with few or no calories for sugar-sweetened beverages.



Mr. and Mrs. Wiltse



## Wiltse to celebrate 60th

Rowan and Twila Wiltse of Wayne will celebrate their 60th wedding anniversary with an open house on Saturday, June 22.

The event will be held from 2-4 p.m. at Our Savior Lutheran Church, 421 Pearl Street, in Wayne and will be hosted by their children and their families.

Their children are Mark Wiltse of Laurel and Carol (Joseph) Potts of

Racine, Wisc. They have four grandchildren and one great-grandchild

Rowan Wiltse and the former Twila Heier were united in marriage on April 17, 1953 at Redeemer Lutheran Church in Wayne. Their children are Mark Wiltse of Laurel and Carol (Joseph) Potts of Racine, Wisc. They have four grandchildren and one great grandchild.

**MAJESTIC THEATRE**

**NOW SHOWING**

June 13 - June 16

ALL ROADS LEAD TO THIS

**FAST & FURIOUS 6**

PG-13

Thursday: 7:00 p.m.  
Friday: 7:00 p.m.  
Saturday: 7:00 p.m.  
Sunday: 2:00 p.m.

**Admission \$4**

COMING SOON:  
Epic,  
Now You See Me

310 Main Street Wayne  
402-833-1833  
majesticonmain.org

Titles and times subject to change.  
Please check the website!

**In Kneads Massage**

Heidi L.  
Ankeny, L.M.T.

**402-375-8601**  
111 Main Street St. • Wayne

**Call for An Appointment**

Gift Certificates Available!

**OFFICIAL LINCOLN HIGHWAY ASSOCIATION**

**LINCOLN HIGHWAY CENTENNIAL**

Kearney, Nebraska

June 30 - July 1, 2013

visitkearney.org/2013lincolnhighwaycelebration

1-800-652-9435

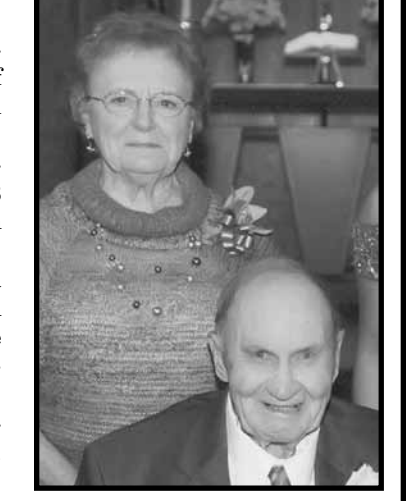
## Card shower requested for Voss anniversary

A card shower has been requested for George and Beverly Voss of Winside in observance of their 60th wedding anniversary.

George Voss and Beverly Ben-shoof were married June 21, 1953 at St. Paul's Lutheran Church in Winside.

Their family includes Brenda and Larry Wells of Norfolk and the late Tim Voss. They have five grandchildren and one great-grandchild.

Cards may be sent to the honorees at P.O. Box 512, Winside, Neb. 68790.



Mr. and Mrs. Voss

## New Arrivals

**RUWE** — Joshua and Sara Ruwe of Wayne, a daughter, Isabelle Beth, 9 lbs., 5 oz., 21 inches, born May 27, 2013. She is welcomed home by a brother, Hunter, 4. Grandparents are Bryan and Ann Ruwe and Kevin and Kandy Frerichs, all of Wayne. Great-grandparents are Miron and Louise Jenness and Beverly Ruwe, all of Wayne. Great-great grandparents are Clarabelle Fank of Emmsburg, Iowa and Orlyn and Doris Frerichs of Coleridge.

**NELSON** — Jace Nelson and Jordan Jensen of Norfolk, a son, Aiden Jeffrey, 6 lbs., 15 oz., born May 15, 2013. Grandparents are Cory Jensen of Broken Bow, Staci Jensen of Norfolk, Terri Nelson of Norfolk and the late Jeffrey Nelson. Great grandparents are Junior Macke of Creighton, Vickie Macke of Norfolk and Dean and Kathy Jensen of Winside. Great-great grandparents are earl and Maxine Jensen of Wayne and Willie and Bev Holdorf of Wisner.

## Briefly Speaking

**Bridge played at Senior Center**  
AREA — Bridge was played at the Wayne Senior Center on Tuesday, June 11 with 16 ladies attending. Bridge was played at four tables. Hostess was Gena Puls. Bridge will be played again on Tuesday, June 18. Hostess will be Mary Mohl. For reservations, call (402) 375-3760 by Sunday, June 16.

**2ND ANNUAL LADIES NIGHT OUT**

*A Sip & See Shopping Spree*

JUNE 27TH, 2013 FROM 5:30-8:30PM • DOWNTOWN WAYNE, NE

Open House, Refreshments, Discount Shopping Bag and Prizes. Call 402-369-3588 for Information

\$8 Early Ticket Sale - June 17th-26th  
At: Acquaintances, Farm Bureau Insurance, Moments Miss Molly's, Swans Apparel & State National Bank  
\$10 Tickets - June 27th at Ticket booth on 3rd & Main St.

Big Hat Contest - Please Wear your Loveliest and Largest Hat

let's face it...

**DAD**  
still  
**ROCKS**

so... which classic hit gets Dad cranking the car stereo ??

It's the tunes he loves...only for the walls!

**ROCK ON**

**YEAH YOU REALLY GOT ME NOW**

father's day sunday june 3rd

**LYRICOLOGY**

**Hallmark**

THE final TOUCH

CARDS...GIFTS...AND FUN !!

110 South Logan Wayne

Find us on Facebook

www.facebook.com/thefinaltouchwayne

**OPEN**

Protecting your investment . . .

We were there when you first decided to follow your passion. Today, we're still here keeping all you have built Safe. Sound. Secure®.

**Northeast Nebraska Insurance Agency**

Wayne 375-2696 • Wakefield 287-9150 • Laurel 256-9138

**Auto-Owners Insurance**

**Senior Center Calendar**

(Week of June 17-21)

**Monday, June 17:** Morning walking, quilting, cards; FROG Exercises, 9:15 a.m.; Pool, 9 a.m. and 1 p.m.; Charlie Maier, "Tribute to Western Heritage," 11:40 a.m.; Board meeting, 1 p.m.; Hand & Foot, 1 p.m.; Dominoes, 1 p.m.

**Tuesday, June 18:** Morning walking, quilting, cards; "Spotlight on Promise"; Afternoon Bridge Club.

**Wednesday, June 19:** Morning walking; Quilting and cards; Pool, 9 a.m. and 1 p.m.; FROG Exercises, 9:15 a.m.; Health Screen by Jam Janis, RN, 9:30 a.m.-12 p.m.; Ray Petersen on the accordion, 11:30 a.m.; Special Luncheon, noon; Hand & Foot, 1 p.m.

**Thursday, June 20:** Morning walking; Quilting and cards; Afternoon Bridge Club; "Not Gne Yet" Rehearsal, 11:40 a.m. and 12:40 p.m.

**Friday, June 21:** Walking, quilting and cards; Pool, 9 a.m. and 1 p.m.; Bingo, 1:15 p.m.; Hand & Foot, 2 p.m.; Dominoes, 2 p.m.

The grass is always greener by your bride

**The Diamond Center - Flowers & Wine**

221 Main Street • Wayne, NE 68787  
402-375-1804 • 1-800-397-1804

www.flowersnwine.com www.diamondking.biz

— WE BUY GOLD EVERY DAY —





## Vacation Bible School

Grace Lutheran Church held "Tell It On The Mountain" for their annual Vacation Bible School. The kids scaled mountain tops and enjoyed a fun adventure during the week of June 2-6.

## Praise Assembly continues series

Praise Assembly of God Church in Wayne has expanded its Sunday School classes.

Phil and Sherry Pfaltzgraph each teach an Adult class. One is focused on the book of Acts in the Bible, giving highlight to experiences in faith as well as current events and the other is a class that teaches foundational Christian living, designed to strengthen Christians with the question "Why do you believe?"

There are two youth classes offered as well. The older students are learning "Fundamentals of Faith," led by Roxie Seivers and the younger class, "Discovering God's World," is led by Cindy Staub.

"Praise Assembly is eager to continue creating classes that help each person grow closer to God,"

said Pastor Jason Pickering. During the praise and worship time there was prayer for needs in the congregation as well as for those in the community.

Pastor Pickering continued a sermon series teaching about the Holy Spirit and its role and function in the believer as well as the church. Pastor Jason continued to teach about the Baptism of the Holy Spirit and the benefits that each person can have when "filled with the Spirit."

Experiencing the baptism in the Holy Spirit can give a person great confidence in doing God's will and work for the Kingdom of God (Philippians 1:6). Pastor Jason used the word "Godfidence" when describing confidence. It will also give a person

power to help them stay out of sin. The reason why this topic is so important is that we need God's power (Acts 1:8) to reach the world for Jesus.

"Jesus wants Christians to be powerful to accomplish what He did on this earth and prepare folks for heaven. Pastor Jason finished with this, "God is still in the miracle working business." Matthew 19:26 says, "but with God all things are possible," Pastor Pickering said.

Praise Assembly meets on Sunday at 9:30 a.m. for Sunday School, 10:30 a.m. for Worship service as well as 6:30 p.m. On Wednesdays, members meet at 6:30 p.m. with something for the whole family.

## Winside St. Paul's Ladies Aid meets

St. Paul's Ladies Aid of Winside met June 5 with 13 members present. DeLana Marotz, Edwin Vahlkamp II and Noah and Evelyn Janke were recognized as guests.

President Daisy Janke presided over the meeting, reciting the LWML Pledge. President Janke had devotions on Psalm 134. The Song of Your Life, "Take My Life and Let It Be" was sung.

Pastor Goodman had the Bible Study on the Small Catechism; The God We Worship." He closed with The Lord's Prayer.

The secretary's and treasurer's reports were given.

Mites were collected.

Lorraine Prince and Pat Janke will attend the LWML National Convention in Pittsburgh June 27-30.

Esther Carlson and Gloria Evans will visit in June.

The next meeting will be Wednesday, July 3.

## Calvary Bible Church in install new pastor at June 23 ceremony

Calvary Bible Evangelical Free Church in Wayne will conduct two celebrations on Sunday, June 23.

An installation service for James Enoch Seal as senior pastor of the congregation will be held at 10:30 a.m. Midwest District Superintendent Noah Palmer will conduct the installation service.

An open house reception will be held that afternoon

from 1:30-3:30 p.m. for Pastor James and his wife, Eva Seal. Superintendent Palmer will also be present at the open house.

The public is invited to either or both of these celebrations. The church is located at 502 Lincoln Street in Wayne.



(Contributed photo)

## Ameritas has Food Fight

Ameritas held its first-ever Food Fight to benefit the Wayne Food Bank. In an effort to help the food bank, the Call Center and Data Processing sides squared off in a two-week competition, with the winners determined by the team donating the most food. The Data Processing team was the winner. "Ameritas is committed to assisting the local community and surrounding areas. This is just another example of how proud we are to be in Wayne," Michele Simon, manager of group customer connections and operations, said.

## Senior Center Congregate Meal Menu

(Week of June 17-21)  
Meals served daily at noon.  
For reservations, call 375-1460  
Each meal served with bread, 2% milk, skim milk and coffee.  
All menus subject to change.

**Monday:** Sliced ham, sweet potatoes, frozen peas, whole wheat dinner roll and Promise, canned pears.

**Tuesday:** Rotisserie pork loin, baked potato with butter, frozen green beans, whole wheat dinner roll and Promise, orange gelatin with shredded carrots and crushed pineapple.

**Wednesday:** Chicken fried steak, country gravy, fresh mashed potatoes and country gravy, frozen corn, whole wheat fresh bread and Promise, apple pie.

**Thursday:** Fried pollack, baked potato with butter, frozen mixed vegetables, whole wheat dinner roll and Promise, canned mandarin oranges.

**Friday:** Grilled chicken smothered in cream of chicken soup, frozen Prince William vegetables, fresh lettuce salad with carrots and Ranch dressing, whole wheat fresh bread and Promise, red gelatin, canned cherries, marshmallows and topping.

## VEL'S CATERING

Meats of all kinds,  
serving to buffet style  
Serving Full Meals!  
Parties • Weddings • Anniversaries  
Catering to all sizes of groups

**Serving Hot Breakfast Until 10:00 a.m.**

### Vel's Bakery

309 Main Street  
Hours: Monday - Saturday, 6 am to Noon

## 375-2088

## Advance Counseling Services, LLC

Jan Chinn, MSE, LMHP, CPC

- Child & Adolescent Concerns
- Abuse & Trauma Counseling
- Stress Management
- Coping with Divorce
- Grief & Loss
- Depression & Anxiety
- Marital & Family Counseling
- Employee Assistance Services

Phone: 402-833-5246  
220 W. 7th St., Wayne • In the BankFirst Building

### Are you looking for services for your friend or loved one?

Mosaic in Beatrice is currently accepting referrals for children and adults with intellectual disabilities in need of services. We provide or coordinate the full spectrum of services, including arranging for special education classes in the local school system as well as providing work opportunities for adults. We accept Medicaid and private pay.

A life of possibilities for people with intellectual disabilities.

Mosaic in Beatrice 722 S. 12th St. | Beatrice, NE 68310-0607  
402.223.4066 | www.mosaicinbeatrice.org

# Saving Lives!

CLICK IT OR TICKET  
DAY & NIGHT

## HEALTH CARE DIRECTORY

### CHIROPRACTOR

**Dr. Robert Krugman**  
Certified Chiropractic Sports Physician

214 Pearl St. Wayne, NE 402-375-3000

### OPTOMETRIST

### MAGNUSON-HOPKINS EYE CARE

Dr. Larry M. Magnuson  
Optometrist

Dr. Josh Hopkins  
Optometrist

215 West 2nd St., Wayne, NE 68787  
Telephone: 375-5160

### MENTAL HEALTH

### COMMUNITY MENTAL HEALTH & WELLNESS CLINIC

219 Main • Wayne, NE 68787

Nathan Houlette, PLMHP PLADC  
Mental Health/Substance Abuse Counselor  
402-375-2468

### WAYNE VISION CENTER

DR. DONALD E. KOEBER  
OPTOMETRIST  
Phone 375-2020  
313 Main St. Wayne, NE

### PHYSICAL THERAPY

### Peterson Therapy Services LLC

Diane Peterson, PT

208 Main St. • Wayne • 402-833-5343

Specializing In: • Orthopedic Care  
• Muscle & Soft Tissue Injury/Pain  
• Geriatrics • Back & Neck Care  
• Mechanical diagnosis & treatment of the spine  
23 Years Experience

**You don't have to drive out of town to get your printer cartridges.**

Save time and money!  
Just drive to

216 Main Street  
Wayne 402.375.3729

## Herman CHIROPRACTIC

Headaches • Sciatica • Low Back Pain  
Athletic Injuries • Industrial Injuries  
Smoking Cessation • Prenatal Care  
Colic • Ear Infection • Bed Wetting

~ Same Day Service ~  
~ New Patients Welcome ~

BCBS, Medicare, Medicaid, Midlands Choice, UHC, Workmans Comp, Coventry and most other insurances accepted

Chiropractic Care • Massage Therapy • Acupuncture  
Orthotics • Health Products

803 Providence Rd.  
Wayne, Nebraska  
(402) 375-3450

309 Main Street  
Pender, Nebraska  
(402) 385-0183

www.hermanchiro.com

## SPACE FOR RENT



**HOMESTEAD**  
Homes of America  
Wayne, NE  
www.hhoa.net  
888-200-4460

**Build Your New Home for as little as \$1,000 down**

*Homestead has helped thousands of families build their new home for less. Call today for more information about this exciting opportunity!*

**LAKE SUPERIOR**

**\$795** Dbl. Occ. **AUGUST 19-23, 2013** Per person from OMAHA, LINCOLN, NORFOLK, FREMONT

TOUR INCLUDES: • 9 Meals • 4 Nights • Motor Coach • All Admissions Paid For

With **\$100** Discount Now only **\$695** Single Occ. only \$860 Dbl. Occ.

For complete brochure, call: **1-800-806-7944**

**MOOSTASH JOE TOURS** www.mjtours.com

# Business & Professional Directory

**ACCOUNTING**

**Certified Public Accountant**

**Kathol & Associate P.C.**

104 West Second Wayne  
375-4718

**REAL ESTATE**



• Farm Sales • Home Sales  
• Farm Management

**MidwestLand**  
COMPANY

206 Main • Wayne, NE • 402-375-3385  
Quality Representation For Over 48 Years!

**INSURANCE**

Complete Insurance Services

• Auto • Home • Life  
• Farm • Business • Crop

**First National Insurance Agency**

Gary Boehle - Steve Muir  
411 E. 7th - Wayne 375-2511  
firstnatins@inebraska.com

**SERVICES**

Join... **The Century Club**

ARE YOU 50 or BETTER?

Free Movies  
Group Travel  
for more info

Contact Kaki Ley (402) 375-1130

**STATE NATIONAL BANK & TRUST COMPANY**  
122 Main St Wayne

**Northeast Nebraska Insurance Agency**

111 West Third St. Wayne  
375-2696

• Auto • Home • Life  
• Health • Farm

Serving the needs of Nebraskans for over 50 years.  
Independent Agent

**JOHN'S WELDING & TOOL LLC**


375-5203 • 800-669-6571

Lathe & Mill Work; Steel & Aluminum Repair & Fabrication  
24 Hr. Service • Portable Welder  
Pivot Bridges & Steel Feed Bunks  
Hours: 8:00 am - 6:00 pm Mon.-Fri.;  
8 am - Noon Sat.  
After Hours - 369-0912  
320 W 21st St., 1 mi North &  
1/8 West of Wayne.

**State Farm**

Like a good neighbor, State Farm is there.®

Auto, Home, Life, Health



Rusty Parker, Agent  
402-375-3470  
202 Pearl Street • Wayne

**VEHICLES**


**HEIKES**  
Automotive Service

• ASE Certified  
• Complete Car & Truck Repair  
• Wrecker • Tires • Tune-up  
• Computer Diagnosis

419 Main Street Wayne  
Phone: 375-4385

**PLUMBING**

For All Your Plumbing Needs Contact:



**Spethman Plumbing**  
Wayne, Nebraska

Jim Spethman  
375-4499

**YAMAHA**  
Kawasaki  
Honda  
Come ride with us.

• Motorcycles • Jet Skis  
• Snowmobiles

**B&B Cycle**

So. Hwy 81 Norfolk, NE  
Telephone: 371-9151

## Fly exposure can lead to blindness and prevent strong weight gain among cattle

Shoo, fly!

With summer upon us, it is important to keep flies off of cattle.

When cattle are exposed to flies, they will often bunch up, with the dominant animals in the center, seeking protection from the flies, said Dave Boxler, University of Nebraska-Lincoln Extension educator in Lincoln County. This behavior can cause an increase in the animals' temperature and stress levels, which could lead to weight loss.

There are three types of flies that cattlemen need to be on the look out for: horn flies, stable flies and face flies.

"I'm anticipating seeing a normal fly population this year," Boxler said.

Horn flies feed off of the blood of cattle and congregate around the horns, necks, and throats of the animals. They feed about 30-35 times a day.

Boxler said that horn flies can cause a loss of \$800 million annually.

"It is certainly very important to attempt to control this fly during summer," Boxler said.

Two hundred flies on one animal are enough to see an impact. In one study, calves whose mothers were protected from the horn fly gained an average of 10-20 pounds more than calves whose mothers did not receive pest control, Boxler said.

One way to reduce the impact of horn flies is to buy ear tags filled with an insecticide. These ear tags can cost about \$1.50-\$2 per tag. There are also other methods of horn fly control such as dust bags,

oilers or feed-additives (IGRs).

Stable flies also are blood-feeding flies and feed off of the legs of cattle.

"In a pasture setting, stable flies are most difficult to control," Boxler said.

Cattle affected by stable flies will stomp their legs and bunch in corners of the pasture.

Stable flies have strong impacts on weight gains, Boxler said.

In one study, steers that were protected from stable flies gained on average .44 pounds more per day than steers that didn't receive protection.

Boxler said that the most effective method of controlling stable flies is to spray cattle with an insecticide.

A quart of insecticide can cost around \$16-\$20. This mixes with water and creates about 25 gallons of spray.

Face flies are another type of fly that bother cattle.

Female face flies feed on secretions from the nose and eyes of cattle, Boxler said.

"It scratches and irritates the eye tissue, which actually sets up the animal for pink eye," Boxler said. "It could cause blindness."

Face flies are a larger concern in areas which receive more than 30 inches of precipitation and have a higher humidity.

"Out in western Nebraska where we have more arid conditions we see the face fly less frequently than in eastern Nebraska where the face fly is an annual problem," Boxler said.

## Wayne County 4-H participants learn by doing



(Contributed Photo)

Six 4-Hers participated in the ATV safety course taught by Aaron Nygren of the UNL Extension office in Colfax County. The 4-Hers learned about 16 different safety modules and practiced the safe maneuvers on the ATVs. Here, Nygren works with participants Elizabeth Junck, Brandon Sebade and Ethan Sebade.



(Contributed Photo)

Several workshops were offered to Wayne County 4-Hers in recent weeks. A floral design workshop was held at the Wayne County Fairgrounds with ten 4-Hers attending. The class was taught by Mary French of Carroll. The 4-Hers learned about various types of flowers and were able to practice their design skills to make their own arrangements. Taking part were (from left) Faith Junck, Grace Heithold, Erin O'Reilly, Hope O'Reilly, Madison Jenkins, Taylor French, Tori French and Peyton French.

**EXPERIENCE THE QSI ADVANTAGE!**

RESIDENTIAL • COMMERCIAL • AGRICULTURAL • EQUESTRIAN

Call for a free estimate

- FULLY INSURED
- LICENSED ICC GENERAL CONTRACTOR
- STEEL ROOF & SIDES
- 90 MPH WIND LOAD
- 8' O/C POST-SPACING
- 4' O/C TRUSS SPACING
- 30LB. TRUSS LOAD
- 3PLY LAMINATED POSTS (60 YR. WTY.)
- 16 COLORS AVAILABLE

**40'x 60'x 12' Garage \$21,950**

Price Includes:  
1 - 3' Entry Door  
2 - 10'x10' Overhead Doors  
Delivery & installation on your level site (12" Soffit, gutter & wainscot not included in price)

**QSI**  
Quality Structures, Inc.

www.qualitystructures.com

**1-800-374-6988**

**IRRIGATION/WATER MANAGEMENT FIELD DAY**

**THURSDAY, JUNE 27, 2013 • 10 A.M.**  
**LES ALBRECHT FARM**

Located 5 miles west of Jackson, NE on Highway 20 or 10 miles east of Highways 9 and 20 junction north of Allen (Location will be marked)

**ITINERARY:**

- 10-11 a.m. **Reinke presentation on VRI and Remote Management Technologies**
- 11 a.m.-12 p.m. **Complete Agronomy Solutions presentation on water management/VRI preparation**
- 12-1 p.m. **Break for lunch (Hamburgers, hot dogs, chips and drinks)**
- 1-2:30 p.m. **Chris Arnold from JD Water with Field Connect Data information**
- 2:30-4 p.m. **Session over** Participants can go out to the field to discuss anything further, if they'd like. Gator vehicles will take them to the JD Field Connect probe.



**Grossenburg**  
servicing your GROWING needs  
www.grossenburg.com

Wayne, NE (402) 375-3325 | Winner, SD (605) 842-2880  
Blountfield 373-4449 | Harlingen 234-3908 | Phone 234-5431  
Leland 254-3221 | Phone 817-2636

**Reinke**  
MORE RIGHT THAN RAIN



(Contributed Photo)

A glass etching workshop was attended by 16 area 4-Hers. The 4-Hers were able to make their own design on a glass vase by using the etching process. This project that they created can be entered in the fair under floral design accessory. Laura Greunke, Emily Longe and Kayli Naeve are shown working on their projects.

Is Your Body Out of Shape?

**We'll get you straightened out!**

When accidents happen, it's good to know you have the area's most trusted name in auto body and paint services on your side. Our customers trust us for honest assessments, top-quality work and reasonable prices.

**Tom's BODY & PAINT SHOP, INC.**  
108 Pearl Street  
Wayne, Nebraska **402-375-4555**





To place your ad call: Jan at 402-375-2600 or 1-800-672-3418 • Fax: 375-1888

DEADLINES: Line Ads Tuesdays at Noon • Display Ads Monday 5:00 p.m.

# CLASSIFIEDS

Rate Schedule: 25 WORDS OR LESS - 1 WEEK \$14 - 2 WEEKS \$24 • This is a Combination Rate with The Morning Shopper

Ads must be prepaid unless you have pre-approved credit. Cash, personal checks, money orders, VISA, or MasterCard are welcome.

Call: 402-375-2600, Fax: 402-375-1888, or Visit Our Office: 114 Main Street, Wayne, NE.

POLICIES — We ask that you check your ad after its first insertion for mistakes. The Wayne Herald is not responsible for more than ONE incorrect insertion or omission on any ad ordered for more than one insertion. \*Requests for corrections should be made within 24 hours of the first publication. \*The publisher reserves the right to edit, reject or properly classify any copy.



### HELP WANTED

#### Laurel-Concord Public Schools

accepting applications for a special education para-professional for the school year 2013-14. Applicants must be flexible, have strong interpersonal relationship skills, a good work ethic, good academic skills, be able to work with all ages and maintain confidentiality. A letter of application and resume must be submitted to the Central Office by the end of the day on Monday, June 24, 2013. Laurel-Concord Public Schools is an equal opportunity employer.

**Slama Custom Harvesting has several openings for Seasonal Farm Labor.** CDL Required. Send resume to Slama Farms, 58546 858th Road, Wakefield, NE 68784

**Part-Time Bartender Help Needed at the Logan Valley Golf Course in Wakefield.** Some evenings and weekends. No experience necessary, will train. Call 402-369-3745

### Help Wanted

Employment Works, Inc. has a part time position open in the Wayne area providing community based supports for people experiencing a disability. Must have a high school diploma/equivalency, valid driver's license and insurance, strong references, excellent communication skills and a genuine desire to see people reach their potential. Starting wage is \$9.00 an hour. Applicant must be able to work 20 to 25 hours per week predominately weekday mornings and some weekends. Background checks and drug testing mandatory. Please call Employment Works, Inc. at (402) 371-1011 and ask for Jodi or Aleigha for more information or stop by the office at 1203 S. 8th. St. in Norfolk for an application.

### ACCEPTING APPLICATIONS

Join our team at **Cubby's in Wakefield.** Part-time positions - days, nights, weekends. Flexible around school schedules. Must be 19 years old for cashier, 16 years old for deli. Drug-free workplace. Drug screen, background checks. Apply in person, ask for the manager.

**CUBBY'S**  
206 Oak St.  
Wakefield, NE 68784

**GODFATHER'S EXPRESS**  
Hours - Deli: Mon.-Sat.  
5 am-Midnight, Sun. 6 am-Midnight  
Store: Mon-Sat 5 a.m.-1 a.m.  
Sun. 6 a.m. - 1 a.m.



### HELP WANTED - Part-Time Summer Maintenance

**HILLCREST CARE CENTER & ASSISTED LIVING**  
702 Cedar Ave. • Laurel, NE • 402-256-3961

### HELP WANTED

**Housekeeping Part-Time**  
**Laundry Aide Part-Time**

**HILLCREST CARE CENTER & ASSISTED LIVING**  
702 Cedar Ave. • Laurel, NE • 402-256-3961

### MORTGAGE LOAN ASSISTANT POSITION AVAILABLE

Security Bank in Laurel has an immediate opening for a Part-Time Mortgage Loan Assistant. Responsibilities include assisting mortgage loan department with the entire mortgage loan process. (Hours may be flexible to meet successful applicants needs.)

Interested applicants should contact **Susie Koranda at (888) 256-3247**, for position details.



Laurel 402.256.3247 Osmond 402.748.3321 Allen 402.635.2424 Hartington 402.254.2455 Coleridge 402.283.4251

Equal Housing Lender www.mysecbank.com Member FDIC

### -Help Wanted- MED AIDE/CNA

Full-Time  
Evenings & Overnight Shifts  
Full-Time Benefits

Apply in Person

**The Oaks**  
1500 Vintage Hill Drive  
Wayne, NE 68787

402-375-1500

EOE

"Our Family Is Committed To Yours"



### State National Bank & Trust Company is looking for an Operations Assistant/Teller to join our team.

The successful candidate must be an outgoing, people-oriented person with a strong attention to detail and ability to multi-task. The job involves a wide range of duties related to bank systems, merchant services, bookkeeping and customer service, including opening new accounts; assisting customers with deposits, withdrawals, payments and coin and cash orders; identifying fraudulent activity; participating in training programs and community activities; maintaining a well-developed knowledge of the Bank's products and services; and performing other duties or special projects as assigned.

Candidate must possess excellent communication skills, both verbal and written; excellent organizational and time management skills; proficiency in computer skills, including Word & Excel; and the ability to maintain confidential customer and Bank information in a responsible and secure manner. Candidates must also be able to stand for long periods of time and lift 20-50 pounds.

This is an entry level, full time position. This position will give you an opportunity to join a community-focused bank that offers a competitive salary and benefits package, including paid holidays, PTO, medical/dental/eye insurance, and 401(K). Requirements include: Bachelor's Degree and previous retail and/or sales experience. Cash handling experience preferred.

Submit a cover letter and resume to State National Bank & Trust Company, Attn: HR Dept., PO Box 130, Wayne, NE 68787, or via email to [info@state-national-bank.com](mailto:info@state-national-bank.com).

State National Bank & Trust Company is an Equal Opportunity Employer.



Hometown People.  
Hometown Spirit.

STATE NATIONAL BANK & TRUST COMPANY  
122 Main Street Wayne, NE 68787-0130  
(402) 375-1130 www.state-national-bank.com

### NorthStar Services in Wayne has part-time positions available on the morning, evening, weekend, and overnight shifts.

As an organization, we support persons with developmental disabilities to access and participate in their community, develop social networks and teach life skills, so people are successful in their homes, community and with employment opportunities.

All applicants must be at least 18 years of age, have a valid drivers license, the ability to lift 45 lbs., possess a high school diploma or GED, and be able to read, write, and comprehend the English language.

Applicants should have good interpersonal skills and the ability to work with a wide variety of people.

Positions are up to 30 hours per week.

Applicants are required to attend job training, most of which are day hours (example: 8:30am-4:30pm)

Part-time positions must be available to work on holidays and weekends.

Starting wage is \$10.14 per hour

with a wage increase to \$10.45 after completion of training.



Serious applicants should apply at:  
**Northstar Services**  
209 1/2 S. Main Street  
Wayne, NE 68787



Valmont Newmark in Columbus, a division of Valmont Industries, Inc. is adding a 3rd shift.

### NOW HIRING

**IMMEDIATE OPENINGS FOR WELDERS** (2nd & 3rd shift): Previous welding experience preferred. Must be able to pass weld test for metal core welding at time of interview. Blue Print reading and knowledge of standard measurements a plus.

Benefits include Medical, Dental, Vision, Paid Vacation, Paid Holidays, Company Match on 401(k) and much more.

Apply in person at  
1600 E. 29th Ave. Columbus, NE or at Workforce Development  
Valmont is an Equal Opportunity/Affirmative Action Employer

### Heritage Manufacturing, Inc.

Apply Today!!!

For a variety of positions:  
•Welders TIG & MIG  
•SS Polishers & Finishers

Will train the right individuals

Heritage Manufacturing, Inc. is now taking applications for motivated individuals looking for a long-term career working with a World Class Manufacturer. Heritage has some long-term contracts for electronic enclosures for oil and gas hydraulic fracturing systems and power plants. Other industries being served include water treatment plants, petrochemical plants and processing plants producing pharmaceuticals, beef, poultry, cheese and dairy products.

Heritage Manufacturing, Inc. offers a comprehensive benefit package that includes vacation, health insurance and 401(k) plan. EOE Send resume or apply at: Heritage Manufacturing, Inc., Attention: Production Manager, 905 Centennial Rd., P.O. Box 37, Wayne, NE 68787.



**HERITAGE**  
MANUFACTURING, INC.

### -Help Wanted-

**Cook** position available. Working closely with our Dining Services Director, you'll be responsible for the Community's food ordering, preparation, and delivery as well as kitchen sanitation. Tasks in this role include ensuring food is prepared in a nutritional and appetizing fashion, maintaining supplies and equipment, and providing excellent customer service to both internal and external customers.

Position requirements include:  
• Must be formally trained in the culinary arts, or have equivalent experience in the culinary arts.  
• Ability to communicate effectively with residents, families, staff, vendors and the general public.  
• Must have compassion for and desire to work with the elderly.  
• Must meet all health requirements, including TB, and pass background checks.

Seeking Part-Time candidate to work 6:00-2:00pm and/or 12-7pm with flexibility. Weekend rotation as well.

We are proud to be an Equal Opportunity Employer. The Oaks is an Emeritus Community.

Applications can be filled out at  
1500 Vintage Hill Drive Wayne, NE 68787



**The Oaks**  
1500 Vintage Hill Drive  
Wayne, NE 68787  
402-375-1500 EOE

"Our Family Is Committed To Yours"



# CLASSIFIEDS

## FOR SALE

**FOR SALE OR RENT:** Mobile home. 2BR and 2 baths. All appliances. Ph. 402-375-4290 or 402-369-1244.

**FOR SALE:** I-Beams, various lengths and widths. Ph. 402-369-2534 or 402-369-2350.

**FOR SALE:** 2006 Chevy Impala, LTZ. \$6,500 OBO. Call 402-518-0566.

**FOR ALL** your baking and/or gift giving needs, contact your local Tupperware consultant. Nearly 20 years of experience. Call Clara Osten at 402-518-8030 or 585-4323. Leave a message.

**Wayne State College Surplus Auction**  
Desks, WSC apparel, tables, weight equipment, TVs, VCRs, sump pump, flat panel monitors, etc.  
For a list of items and bid instructions go to:  
[http://ecampus.wsc.edu/surplus\\_property/](http://ecampus.wsc.edu/surplus_property/)  
Submit bids by 5:00 pm June 29.



**Under Construction Now**  
*The last Cul De Sac lot on Donner Pass, Wayne, NE*  
**Craftsman Style open concept plan.**  
Don't miss out on this 4% mortgage money. Rates have moved up from 3.25% already this year. Don't miss out on this classic family home, to be completed in August.

Contact Greg Kallhoff  
Office 402-375-3515  
Cell 402-369-1305  
hhoa.net

**HOMESTEAD**  
Homes of America  
106 Main, Wayne, NE

**June is Home Ownership Month!**  
Make your Dream of Owning a Home Come True with this NEW LISTING!



Great location close to school! This charming 4 bedroom home features 15 baths, a main level laundry and beautiful stained glass windows. The wood floors were recently refinished. Other updates include a newer heating/cooling system, roof, plus interior and exterior paint. Enjoy summer evenings on the large back patio!

**220 Douglas Street**



**SOLD**  
209 South Douglas Street



**SOLD**  
614 West 3rd Street



**SOLD**  
808 Pearl Street



**SOLD**  
414 Lincoln Street

201 Main Street - Wayne, NE  
Phone: 402-375-1477  
E-Mail: [anoite@1streatysales.com](mailto:anoite@1streatysales.com)  
[www.1streatysales.com](http://www.1streatysales.com)

**1ST REALTY**  
SALES & MANAGEMENT

Follow us on Twitter | Find us on Facebook

**Land & Lake Realty**  
*Selling the area where I live, work, & play!*

**LEWIS & CLARK LAKE**

**OPEN HOUSE**  
Saturday June 15 (On NE side of Lake...follow signs)  
All 4 Homes Open Noon - 3:00 p.m.

**HIDEAWAY ACRES:** (East Entrance) Log cabin interior creates rustic appeal in this 3 bed / 3 bath lake home with excellent floor plan & great lake view. #LL031613



**WALKER VALLEY:** Two New Construction homes. Simple two bedroom cabins in peaceful wooded setting with relaxation in mind. Beach nearby. #LL0111212 / #LL011112



**PRICED TO SELL FAST...**  
**KOHLES ACRES:** (1.4 mi. West of Weigand). Terrific Price on this 3 Bed/2 Bath home in great upkeep plus ample garage space and beach just down the road. \$179,000.00. Listing #LL061812



See detailed information on these and more  
[www.landlakecrofton.com](http://www.landlakecrofton.com)  
Office (402)388-4852  
Sherri Cell (605)760-3026 / Gary Cell (605)760-3027





**Walk to School**  
710 Main Street, Wakefield  
**\$125,000**



Image Coming Soon



**Country-Like Location**  
803 Grainland Road  
**\$120,000**

**3 New Listings Coming Soon!**  
Watch for Details

**Helping you move forward!**  
We offer commercial properties, homes, lots, and land!!

**MidwestLand COMPANY**  
[www.midwestlandco.com](http://www.midwestlandco.com) 402-369-2647

**OPEN HOUSE**  
JUNE 22  
1:00-3:00



**HOUSE FOR SALE BY OWNER**  
**810 Brooke Drive • Wayne, NE**  
**4 Bedroom, 3 Bath, 3-Car Garage Home**

1900+ sq.ft. finished basement. New gourmet kitchen, black granite, new 19-seer heat pump & A/C, tankless water heater, new flooring and paint. Washer and dryer on main floor. Awesome curb appeal. Why build? Just like new — ready to move in today. Take advantage of record low interest rates.

Call 402-369-2521 with questions or to set up appointment for showing.

**New Listings!**



615 West 1st Street



721 West 7th Street - \$70,000



216 Fairgrounds Ave. #26A



524 East 4th Street - \$40,000



809 Brookedale Drive

Call Amy S. Schweers, Broker 402-833-8038 cell  
Dean Carroll, Sales Associate 402-369-1302 cell 402-375-2134 office

**PROPERTY EXCHANGE PARTNERS**  
[www.propertyexchangepartners.com](http://www.propertyexchangepartners.com)

**MISCELLANEOUS**

**GARAGE SALE SCHEDULE**




(Dates subject to change)

**August 2 & 3**  
Ad deadline is July 23 at 5:00 p.m.

**September 6 & 7**  
Ad deadline is August 27 at 5:00 p.m.

**October 11 & 12**  
Ad deadline is October 1 at 5:00 p.m.

**Cleaning out your closets?**  
**Finding things that you forgot were in there?**



If you find a paper route carrier bag that belongs to the Wayne Herald/Morning Shopper, please bring it back - We miss it! Thank you - Circulation Department

**FOR SALE:** 25,000 BTU window air conditioners. Only used one season. Like new. Ph. 402-922-0875.

**FOR SALE:** AKC Bulldogs. Home raised, reputable, basic health guarantee. Pups ready June 30. Ph. 402-385-3201 or cfrey173@wildblue.net

**FOR SALE:** Amana gas range, 3 years old, like new. Call 402-640-5822.

**FOR SALE:** Ranger X Storm Chaser Electric Wheelchair. Tilt Master, \$5,000 O.B.O. Call: 402-751-2340 or 402-460-0729.

**FOR SALE:** Round corn stalk bales. Will deliver. Ph. 402-369-2534 or 402-369-2350.

**MISCELLANEOUS**

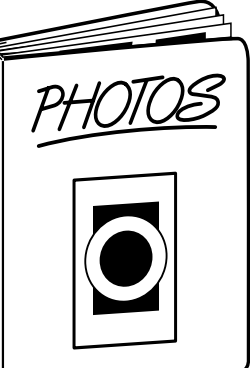
It's SIMPLE! It Gets RESULTS!  
It's VERY COST EFFECTIVE!  
Place your snap ad in over 175 Nebraska newspapers for only \$235.00  
Call Jan at the Wayne Herald today for the details! 402-375-2600 or 1-800-672-3418. (Iowa statewides also available).

**SPECIAL NOTICES**

☆☆☆☆  
\$24 for two weeks worth of ads in the Shopper, Herald and on the internet site!  
Call Jan for details. 375-2600  
☆☆☆☆

**CHECK YOUR AD!**

All advertisers should check their ads in the first issue and report any errors at once to the advertising department. No Allowance will be made after the first issue. The Wayne Herald/Morning Shopper will not be responsible for damages resulting from any errors.



**If you've brought in pictures in the last 6 months for us to scan and use in the Wayne Herald, please feel free to stop in and pick them back up!**

**MEMBERSHIP RATES**

Family	\$268.49
Adult Married Couple	\$207.46
Adult Single	\$152.55
Senior Citizen Married Couple (55+)	\$99.72
Senior Citizen Single	\$74.77
College Year	\$104.69
College Married Couple	\$166.15
College Semester	\$61.50
High School	\$88.39
Middle School	\$71.27
Elementary School (2nd - 4th grade)	\$55.00

**DAY RATES**  
18 & over - \$4.26  
17 & under - \$3.20

**PUNCH CARDS**  
10 Day - \$31.95  
5 Day - \$21.30

**CORPORATE RATES ARE AVAILABLE**  
Ask at the desk.

**Wayne Community Activity Center**  
901 West 7th Street  
402-375-4803

**Internet Nebraska**  
3 months for the price of one



Mention this ad when you sign up and receive THREE months of flat-rate dial-up or ADSL access for the price of ONE!  
(Phone line charges not part of offer.)

Call 1-800-GET-INET  
(1-800-438-4638)

**The Wayne Herald Is Going Green!**

- We use Soy Ink 
- We use newsprint with recycled fiber 
- Recycle Newspapers
- Recycle End Rolls (call or stop in for free end rolls)
- Don't throw away your rubber bands and newspaper bags. Bring them to us to re-cycle.

**The Wayne Herald**  
114 Main Street • Wayne, NE  
402-375-2600 • [www.mywaynenews.com](http://www.mywaynenews.com)



